

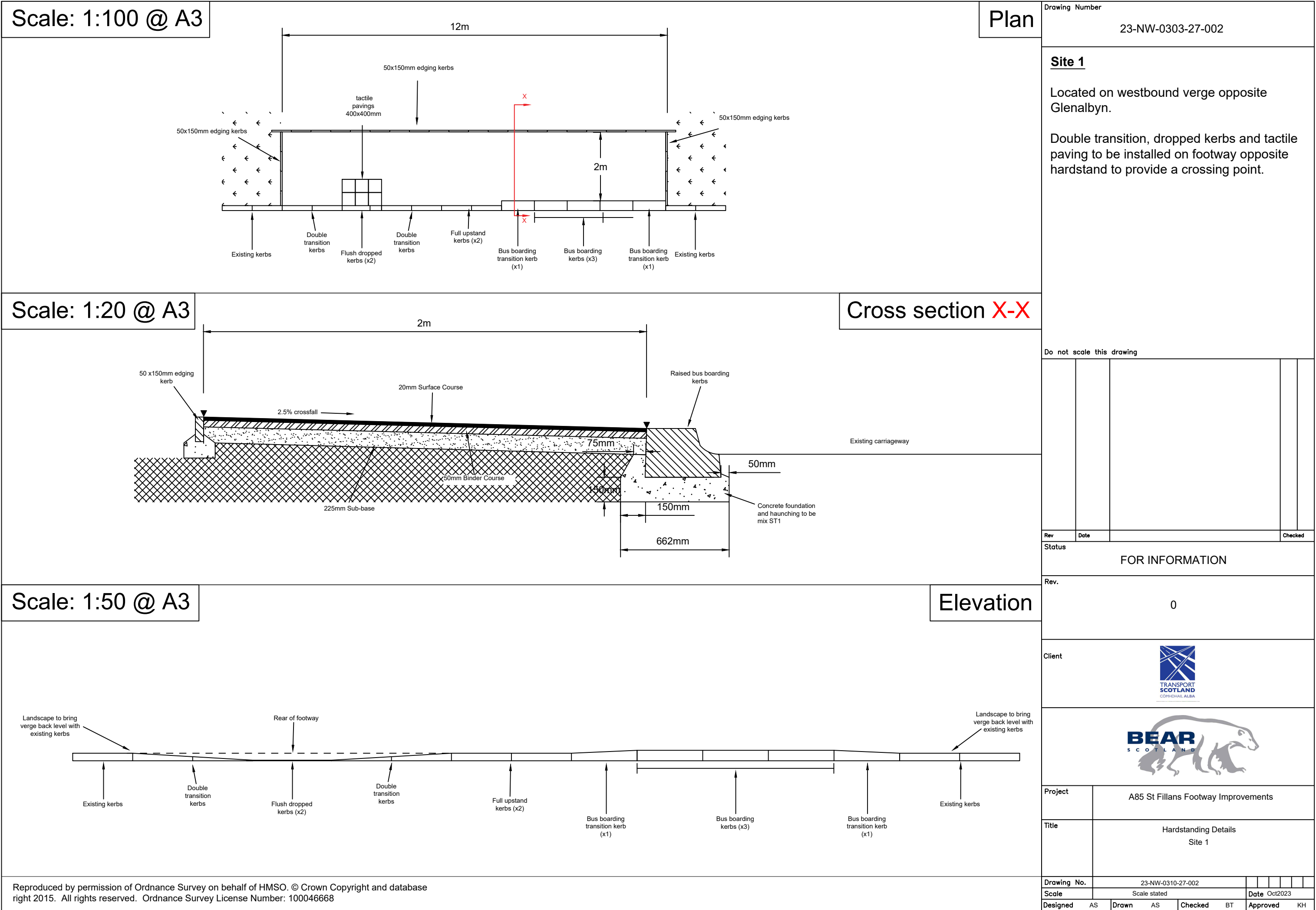
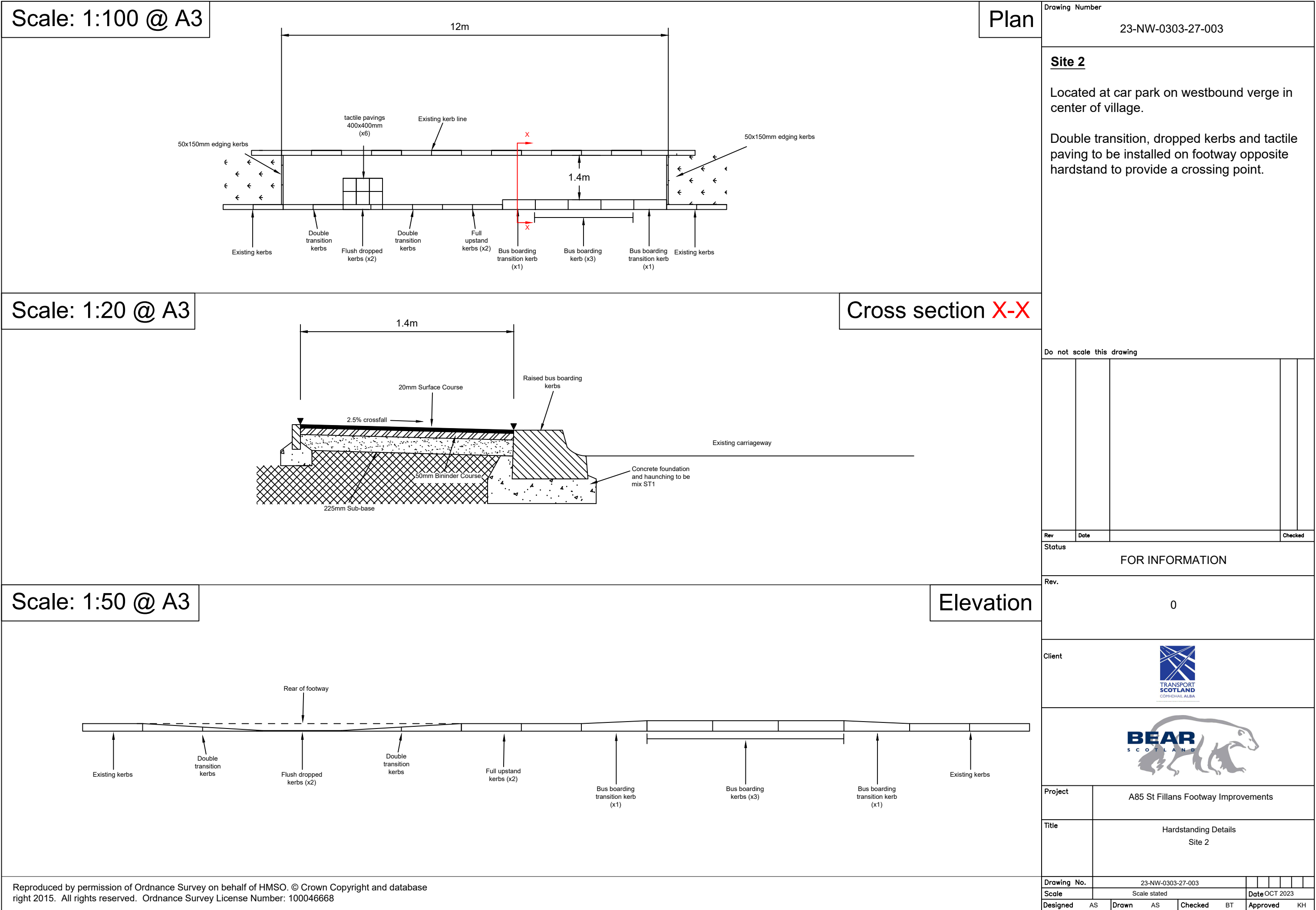


Reproduced by permission of Ordnance Survey on behalf of HMSO. © Crown Copyright and database right 2015. All rights reserved. Ordnance Survey License Number: 100046668

Drawing Number		23-NW-0303-27-001													
Site 1 - Westbound opposite Glenalbyn															
Site 2 - Center of village westbound															
Site 3 - To be removed along with bus stop pole opposite															
Site 4 - Westbound opposite junction with four seasons hotel															
Site 5 - Eastbound opposite westbound layby															
Do not scale this drawing															
Rev	Date									Checked					
Status															
FOR INFORMATION															
Rev.															
0															
Client															
															
															
Project		A85 St Fillans Footway Improvements													
Title		Location Plan Bus Stop Locations													
Drawing No.		23-NW-0303-27-001													
Scale		NTS								Date		Oct2023			
Designed		AS		Drawn		AS		Checked		BT		Approved		KH	





Drawing Number

23-NW-0303-27-003

Site 2

Located at car park on westbound verge in center of village.

Double transition, dropped kerbs and tactile paving to be installed on footway opposite hardstand to provide a crossing point.

Do not scale this drawing

Rev	Date	Checked

FOR INFORMATION

Rev.

0

Client





Project

A85 St Fillans Footway Improvements

Title

Hardstanding Details  
Site 2

Drawing No.

23-NW-0303-27-003

Scale

Scale stated

Date OCT 2023

Designed

AS

Drawn

AS

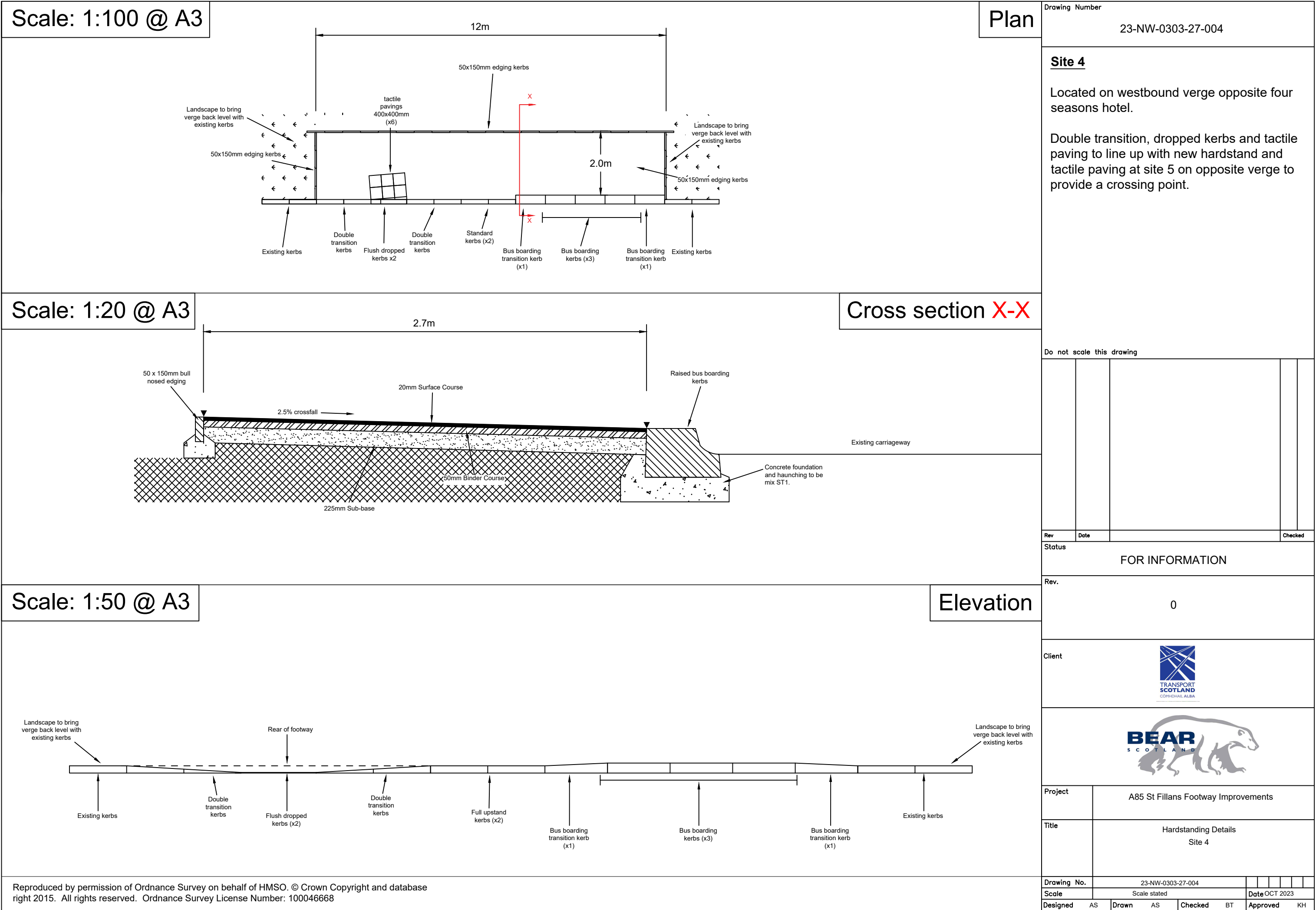
Checked

BT

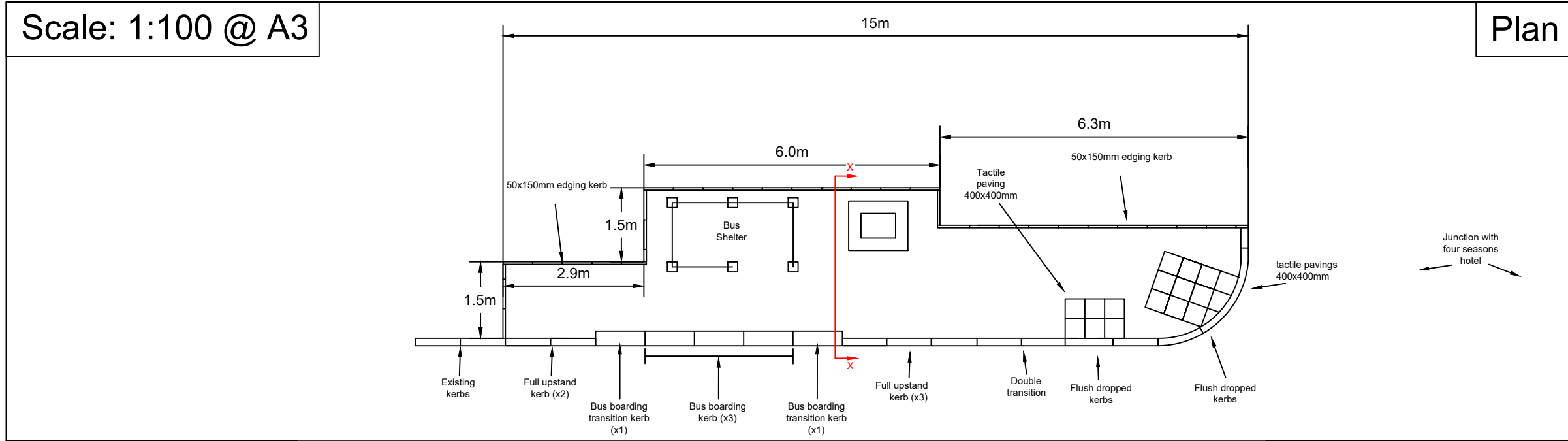
Approved

KH

Reproduced by permission of Ordnance Survey on behalf of HMSO. © Crown Copyright and database right 2015. All rights reserved. Ordnance Survey License Number: 100046668



Scale: 1:100 @ A3

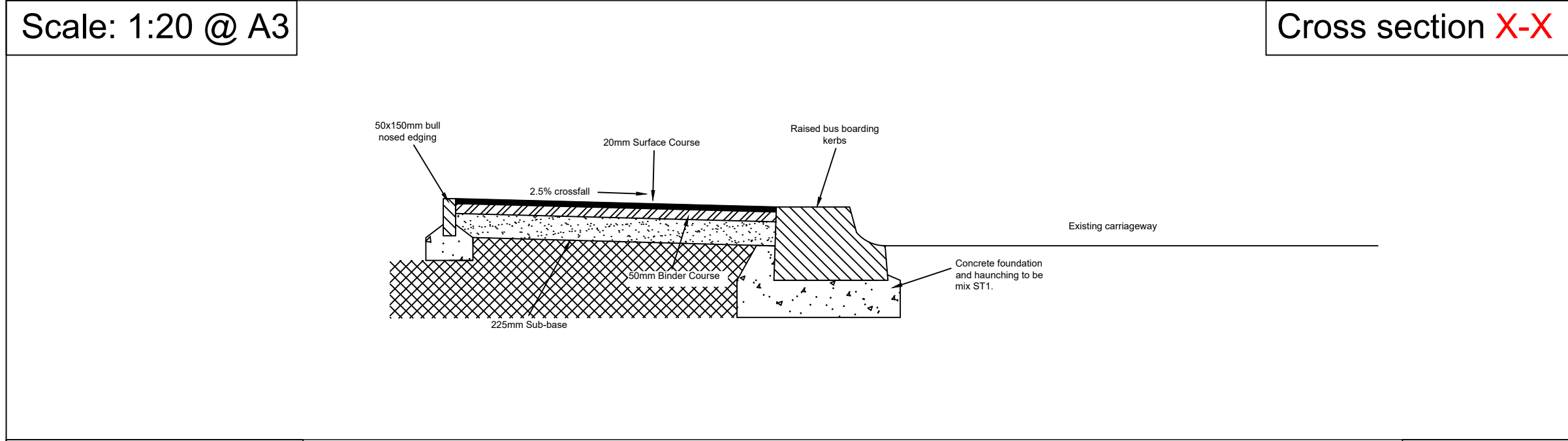


Plan

Drawing Number  
23-NW-0303-27-005

**Site 5**  
Located on eastbound verge opposite westbound layby.  
  
Double transition, dropped kerbs and tactile paving to line up with tactile paving at site 4 to provide crossing point.  
  
New footway to tie into verge. Dropped kerbs and tactile paving to be installed at both sides of junction with four seasons hotel to provide crossing point into St. Fillans village.

Scale: 1:20 @ A3

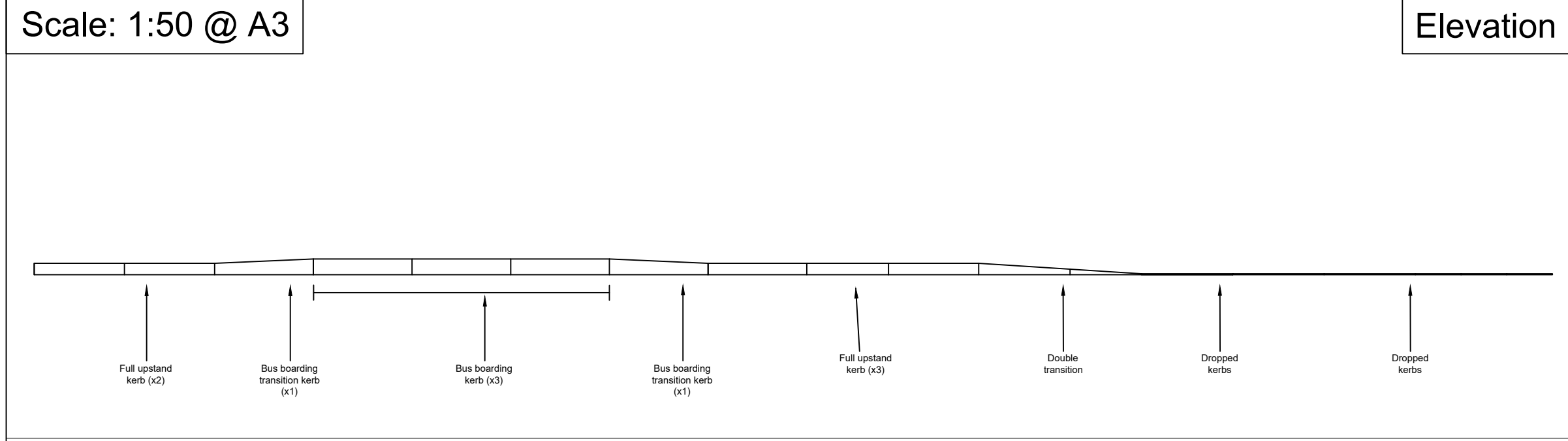


Cross section X-X


Do not scale this drawing


Rev	Date			Checked
Status				
FOR INFORMATION				
Rev.				
0				

Scale: 1:50 @ A3



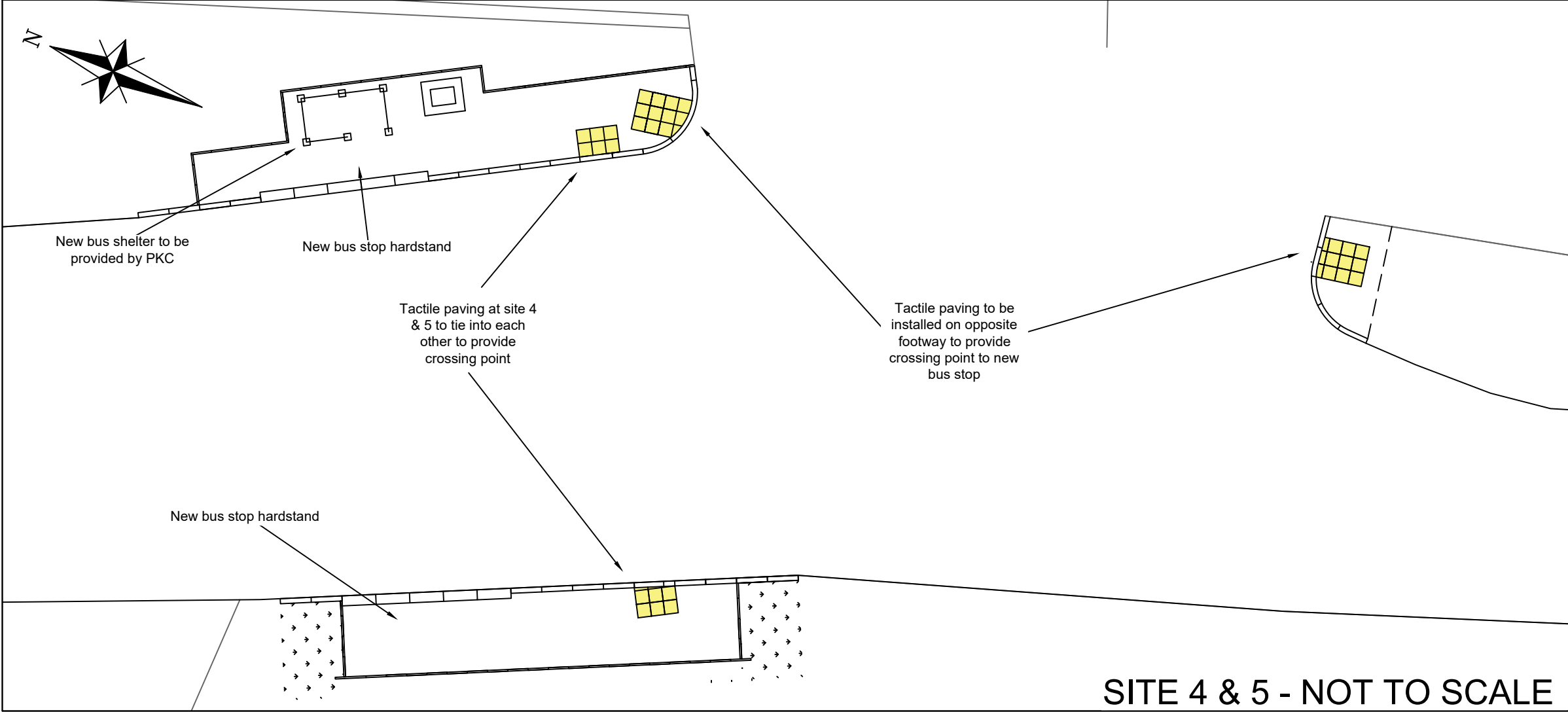
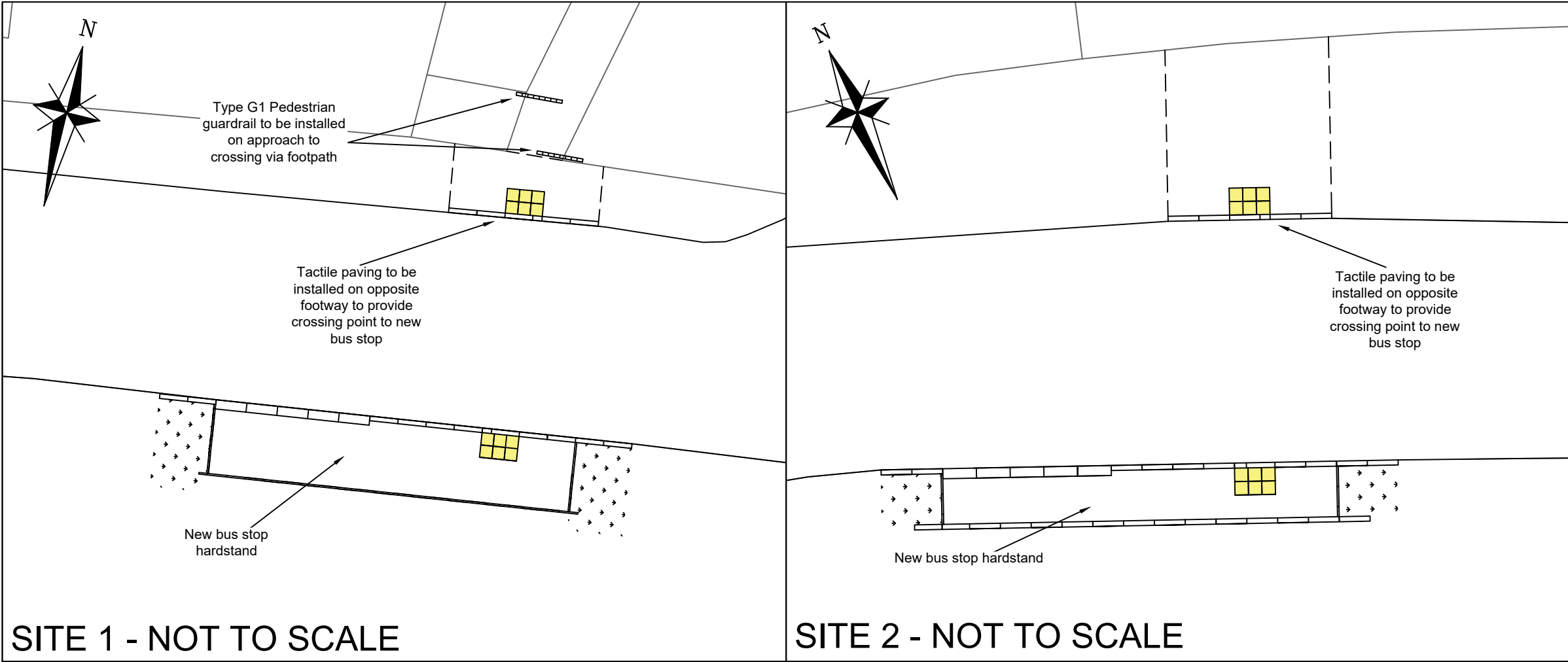
Elevation



Client  




Project  
A85 St Fillans Footway Improvements

Title  
Hardstanding Details  
Site 5



Drawing Number		23-NW-0303-27-006													
Site 1 - Refer to drawing 22-NW-0303-27-002 for details.															
Site 2 - Refer to drawing 22-NW-0303-27-003 for details.															
Site 4&5 - Refer to drawings 22-NW-0303-27-004 & 22-NW-0303-27-005 for details.															
Do not scale this drawing															
Rev	Date									Checked					
Status															
FOR INFORMATION															
Rev.															
0															
Client															
															
															
Project		A85 St Fillans Footway Improvements													
Title		General Arrangement													
Drawing No.		23-NW-0303-27-006													
Scale		NTS								Date		Oct2023			
Designed		AS		Drawn		AS		Checked		BT		Approved		KH	